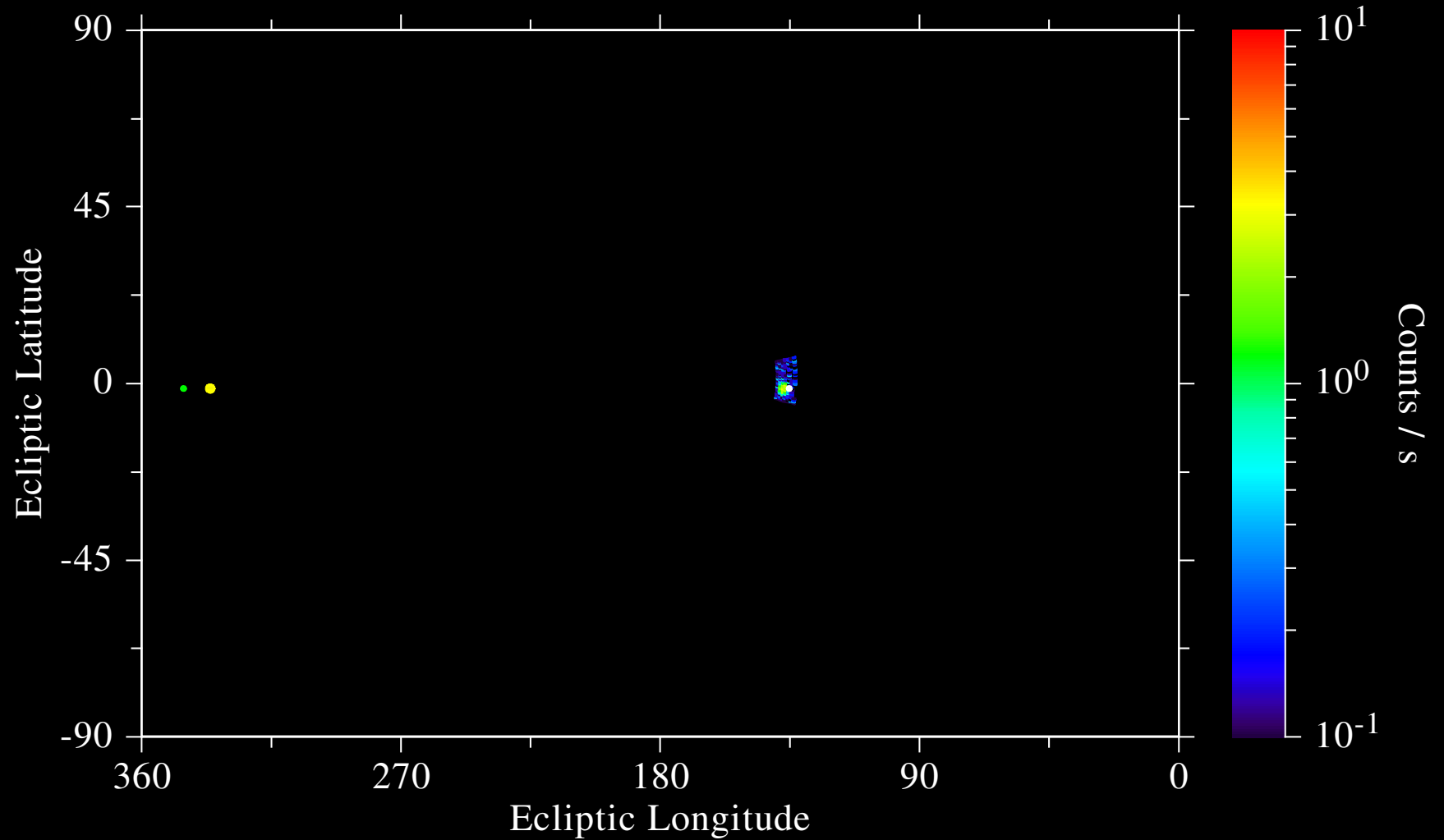


ULYSSES NEUTRALGAS-EXPERIMENT



SCET: 92 009 - 92 009 NARROW FOV
ELCC: SCAN S.F.E= 32 N.F.E= 26 STPWI= 1 STPNO= 6 263
DACC: GAS DATA ON CMD-EXEC= AT END OF GMC DATA MODE
AZCC: SECT.STRT= 78.75 SECT.WDTH=22.5 INTTIM=GMC PMOV 1 GMC
HKCC: HV=-3.2 KV M. Witte 12-06-1997